

# Immune 1: Fortifying Your Immune Cells

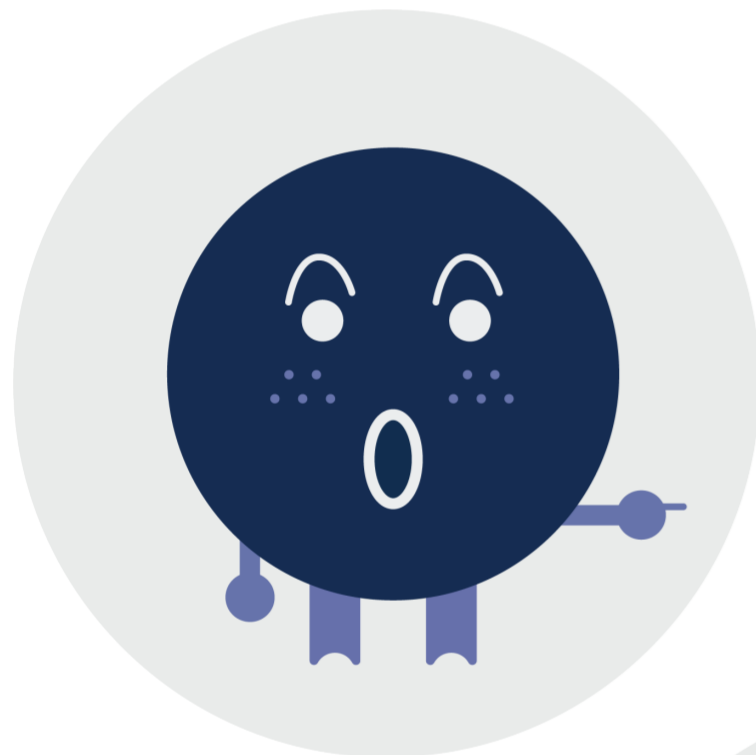
Trillions of immune cells are produced in the bone marrow, which then move to the thymus to learn their specific jobs as immune defenders. In this Medigraytion we will infuse the immature immune cells in the bone marrow with higher intelligence and follow them to the thymus, where they will be categorized into four different factions to learn their specific jobs. We will then travel with the specialized immune cells through the lymphatic system, cleaning and clearing the pathways they use as they seek out and fight pathogens to keep our bodies in a healthy balance.



# Basic Anatomy

Take a glance at these basic anatomy images. You don't need to study them a ton; just know their shapes and locations.

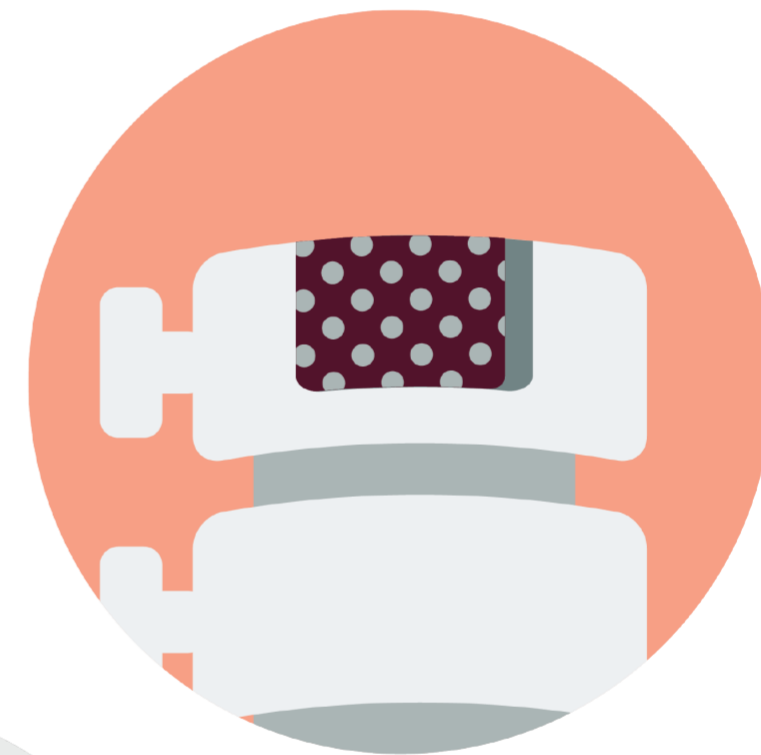
**“Tattle Tale” T Cell**



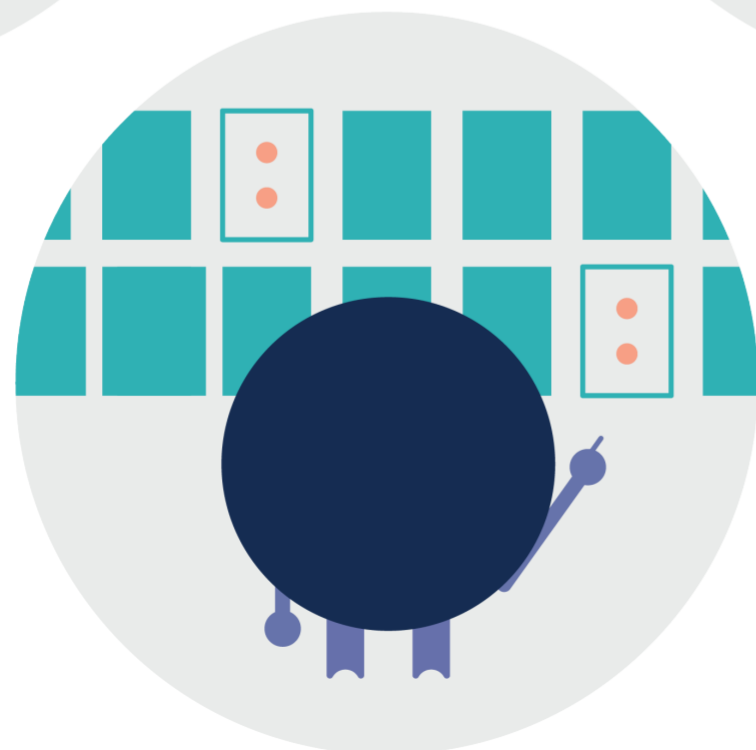
**“Sharp Shooter” B Cell**



**Bone Marrow in Spine**



**Memory B Cell**



**Neutrophil Natural Killer Cell**



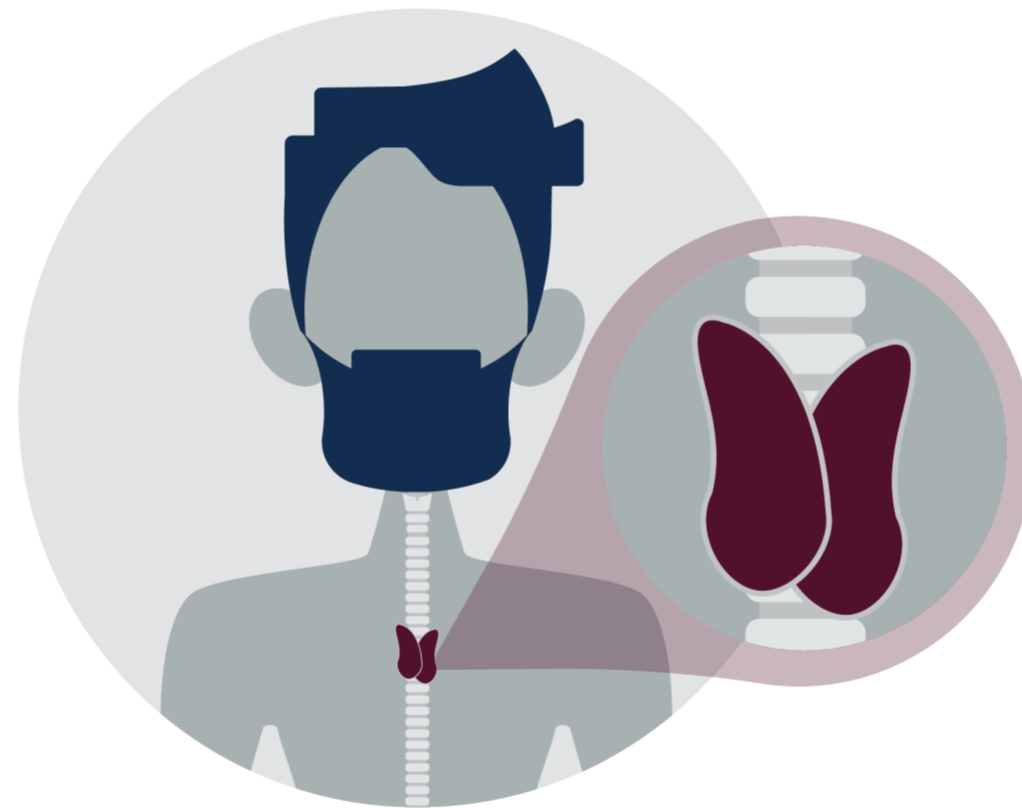
# Basic Anatomy

Take a glance at these basic anatomy images. You don't need to study them a ton; just know their shapes and locations.

**Lymphatic System**



**Thymus**



**Circulatory System**

